



INSTALLATION GUIDE

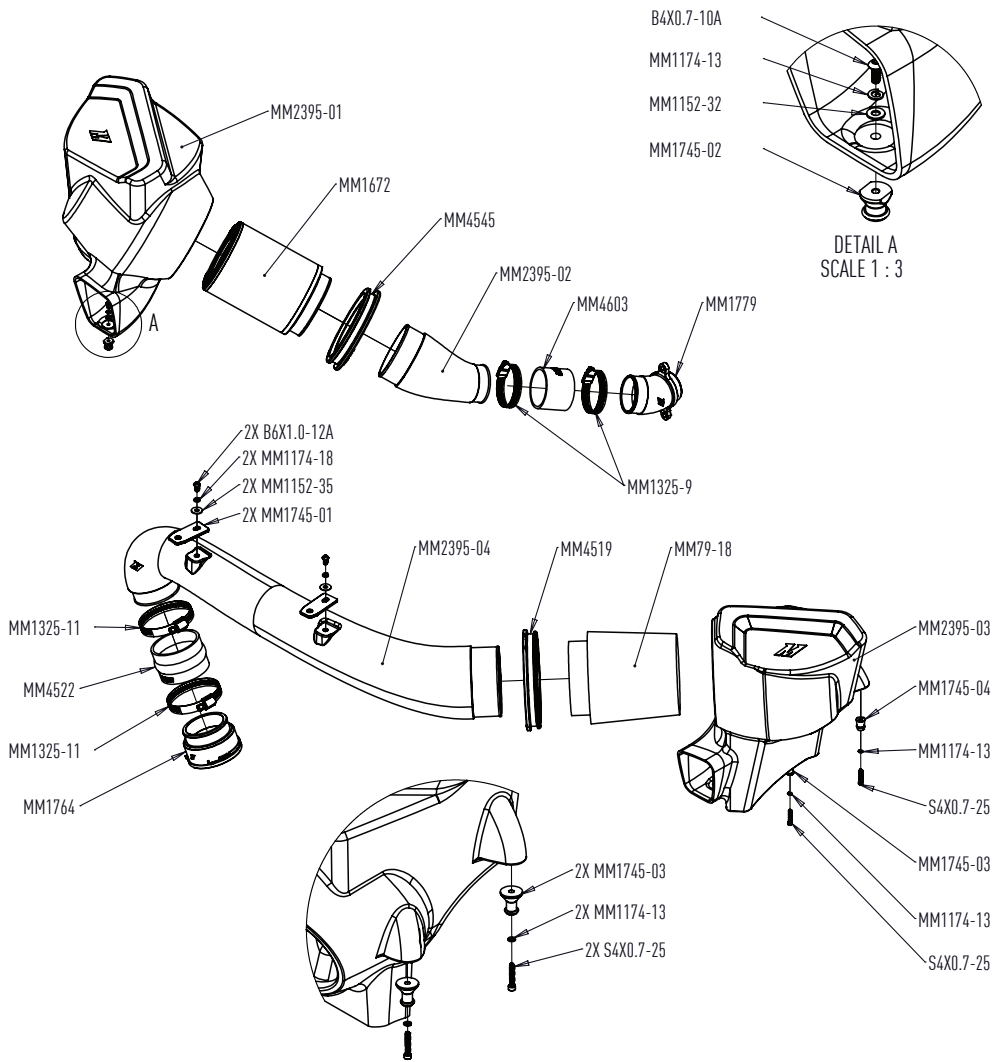
PERFORMANCE AIR INTAKE, FITS BMW G8X M3/M4 2021+
SKU: MMAI-G80-21

TABLE OF CONTENTS

- Pg 01** RESOURCES & CONTACT INFORMATION
- Pg 02** EXPLODED DIAGRAM & PARTS BREAKDOWN
- Pg 03** IMPORTANT SAFETY INFORMATION
 - TOOLS NEEDED
 - INSTALLATION TIME
 - INSTALLATION DIFFICULTY
 - INSTALLATION INSTRUCTIONS
- Pg 08** DISPOSAL INSTRUCTIONS
- WARRANTY INFORMATION

RESOURCES & CONTACT

-  **CALL 1-877-GOMISHI**
CUSTOMER SERVICE HOURS: MON-FRI 8:30AM-5:00PM EST
-  **MISHIMOTO**
-  **GOMISHIMOTO**
-  **MISHIMOTO**
-  **WEBSITE**
WWW.MISHIMOTO.COM
-  **ENGINEERING BLOG**
WWW.MISHIMOTO.COM/ENGINEERING


PARTS BREAKDOWN

PART NUMBER	DESCRIPTION	QTY
MM2395-01	AIRBOX ASSEMBLY 1	1
MM2395-02	INTAKE TUBE 1	1
MM2395-03	AIRBOX ASSEMBLY 2	1
MM2395-04	INTAKE TUBE 2	1
MM4519	GROMMET	1
MM4545	GROMMET	1
MM1672	AIR FILTER	1
MM79-18	AIR FILTER	1
MM4603	SILICONE COUPLER	1
MM1779	TURBO SNOOT	1
MM4522	COUPLER	1
MM1764	ADAPTER ASSEMBLY	1
MM1745-01	BRACKET	2
MM1152-35	FLAT WASHER	2
MM1174-18	LOCK WASHER	2
B6X1.0-12A	M6 12MM BUTTON HEAD BOLT	2
MM1745-02	PEG 1	1
MM1745-03	PEG 2	3
MM1745-04	PEG 3	1
MM1325-9	50-70MM WORM GEAR CLAMP	2
MM1325-11	70-90MM WORM GEAR CLAMP	2
MM1152-32	M4 FLAT WASHER	1
MM1174-13	LOCK WASHER	5
B4X0.7-10A	M4X10MM BUTTON HEAD BOLT	1
S4X0.7-25	M4 X 25MM SOCKET HEAD BOLT	4

IMPORTANT SAFETY INFORMATION

- Mishimoto recommends you use safety glasses and protective gloves during the install of their products
- Raise vehicle only on jack stands or on a vehicle lift
- Allow vehicle to cool completely prior to attempting installation
- Do not run the engine or drive the vehicle while overheating; serious damage can occur
- Please dispose of any liquids properly
- Mishimoto is not responsible for any vehicle damage or personal injury due to installation errors, misuse, or removal of Mishimoto products
- If you need any assistance while installing our products, reach out to our Customer Service Team at 1-877-GOMISHI

INSTALLATION TIME **1 HOUR**

INSTALLATION DIFFICULTY

TOOLS NEEDED

1/4"-DRIVE RATCHET AND EXTENSIONS	7 MM SOCKET	2.5 MM ALLEN KEY
13 MM SOCKET	6 MM SOCKET	3 MM ALLEN KEY
15 MM SOCKET	8 MM SOCKET	4 MM ALLEN KEY
	E8 TORX SOCKET	

INSTALLATION INSTRUCTIONS

01. Remove strut bracing and engine cover.



02. Remove the passenger-side intake. Loosen the worm gear clamp securing the intake tube to the airbox. Separate the intake tube and the air box, then lift the air box straight up to disengage the rubber grommets and remove the stock airbox from the engine bay.

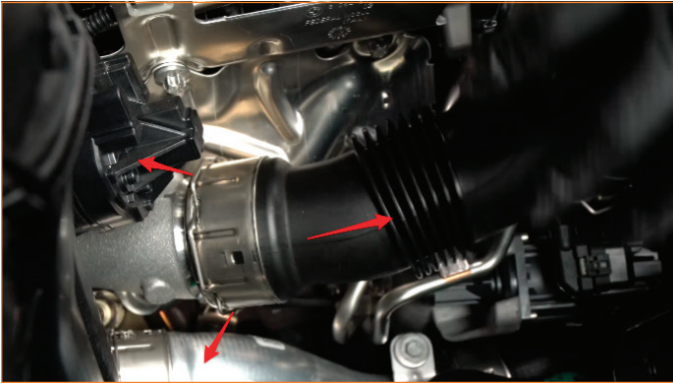
Note: If any of the 3x rubber grommets come off with the air box, reinstall them back onto the vehicle.



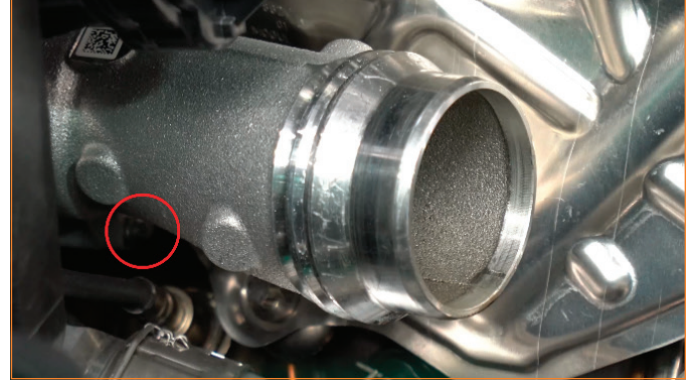
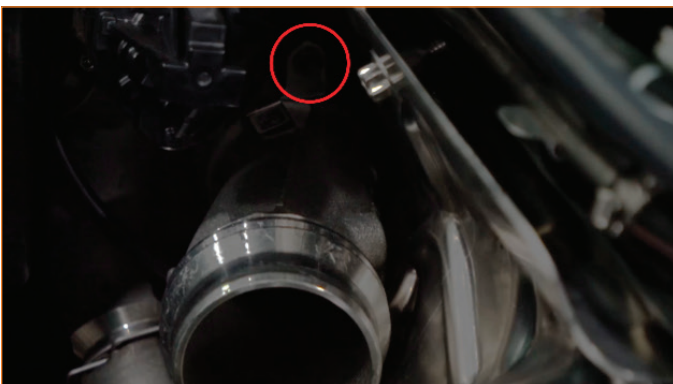
CONTINUED ON FOLLOWING PAGE



03. Disengage the spring clip on the intake tube, then remove the intake tube from the aluminum turbo snout.



04. Loosen the two E8 Torx bolts, then remove the aluminum turbo snout from the passenger-side turbo.



05. Remove the two pop clips securing the driver-side intake tube to the radiator support bar.



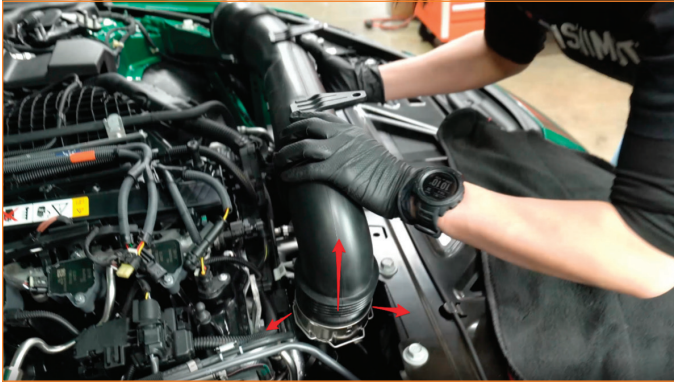
06. Loosen the worm gear clamp securing the driver-side intake to the airbox. Separate the intake tube and the air box, then lift the air box straight up to disengage the rubber grommets and remove them from the engine bay.

Note: If any of the 2x rubber grommets come off with the air box, reinstall them back onto the vehicle.



CONTINUED ON FOLLOWING PAGE

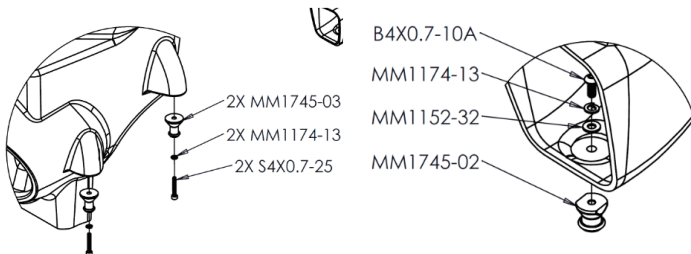
07. Disengage the spring clip on the driver-side intake tube at the turbo, then remove the intake tube from the plastic turbo snout.



08. Install the Mishimoto aluminum turbo snout on the passenger-side turbo. Fasten with stock hardware.



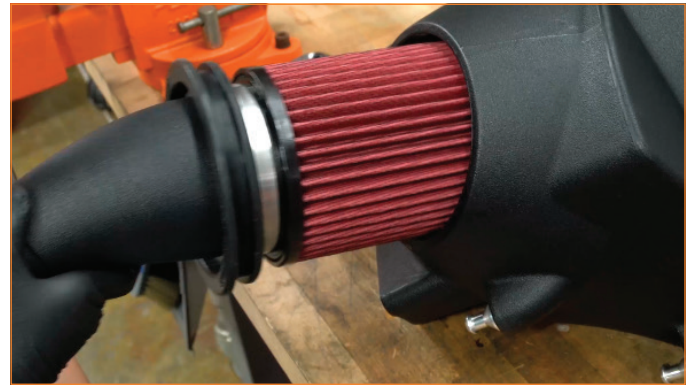
09. Install the 3x aluminum pegs on the passenger-side airbox as shown, using the provided M4 hardware.



10. Identify and assemble the passenger-side intake tube, rubber grommet, and air filter as shown. Use the air filter with a smaller inlet diameter and the smaller rubber grommet in the kit. Ensure the air filter is properly seated, then tighten the worm gear clamp.



11. Assemble the passenger-side air intake by inserting the tube assembly into the airbox. Push the rubber grommet lip all the way around to fully seat it in the airbox lip.



CONTINUED ON FOLLOWING PAGE

12. Install the 2x aluminum pegs on the driver-side airbox as shown.



13. Assemble the driver-side intake tube, rubber grommet, and air filter as shown. Ensure the air filter is properly seated, then tighten the worm gear clamp.



14. Assemble the driver side air intake by inserting the tube assembly into the airbox. Push the rubber grommet lip all the way around to get fully engage it into the airbox lip.



15. Install the straight silicone coupler to the Mishimoto aluminum turbo snout with 2x 50-70mm worm gear clamps. Tighten one of the worm gear clamps to secure the coupler to the turbo snout, leave the other one loose.



16. Install the passenger-side intake assembly. Lower the tube side into the engine bay first and align the intake tube with the coupler, then push down on the airbox to engage the pegs with the rubber grommets. Tighten the other worm gear clamp to secure the intake tube to the silicone coupler.



17. Install the CNC aluminum adapter onto the plastic driver side turbo snout. Ensure the spring clip is properly seated before pushing down on the adapter to engage the clip.



CONTINUED ON FOLLOWING PAGE

18. Install the hump coupler to the CNC adapter with the two 70-90mm worm gear clamps. Tighten one of the worm gear clamps to secure the coupler to the adapter, leave the other one loose.



19. Temporarily disconnect the electrical harness shown to gain more clearance when installing the driver-side intake.



20. Install the driver-side intake assembly. Line up the intake tube with the silicone coupler, then push down on the airbox to engage the bottom rubber grommets.



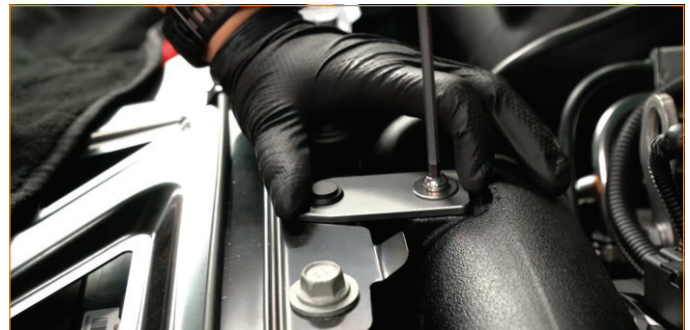
21. Reconnect the electrical harness.



22. Tighten the remaining worm gear clamp.



23. Install two brackets onto the driver-side intake tube using provided M6 hardware. Secure the brackets to the radiator support with the OEM pop clips, then fully tighten the bolts.



24. Reinstall the engine cover and strut braces. The strut brace nuts should be torqued to 28Nm (21 lb-ft). The bolt should be torqued to 56Nm (41 lb-ft).

Congratulations! You have finished your installation.

DISPOSAL INSTRUCTIONS

- › Do not dispose of any product as unsorted municipal waste. Use separate collection facilities. Contact your local authority for information regarding the collection systems available.
- › Never improperly dispose of any coolant, oil, or other chemicals.

WARRANTY INFORMATION



- › All claims must be accompanied with a picture of the Mishimoto product showing the issue for which the claim is being submitted.
- › Mishimoto asks that the customer inspect their purchased item for any damage immediately upon arrival.
- › Any product deemed dead on arrival (DOA) must be claimed within 14 business days of delivery. Claims outside of this time frame will not be covered under the Mishimoto Lifetime Warranty.
- › This warranty does not include payment and/or reimbursement of the cost of labor in connection with the removal of any product returned pursuant to the warranty policy or in connection with the installation of any replacement items provided under the warranty policy.
- › Mishimoto has the right to refuse a claim at any time.
- › When Mishimoto accepts a claim, Mishimoto retains full discretion to choose if it will: (i) repair or replace purchaser's original Mishimoto product; (ii) replace purchaser's original Mishimoto product with the most current available model; or (iii) provide the purchaser with a gift card redeemable on Mishimoto.com in the amount of the original purchase price of the original Mishimoto product. The provision of a replacement of a Mishimoto product is subject to availability and Mishimoto retains the right to substitute any warranty claim item with a comparable item or credit at any time.

- › If Mishimoto determines that it will provide a replacement item in connection with a claim under this warranty policy, and such item is out of stock, Mishimoto will place the customer on backorder and ship the replacement product to the purchaser once it becomes available.
- › Mishimoto is not liable for incorrect shipments in connection with a claim if a claim form is completed incorrectly, or if a model number is not included in a claim.
- › If you have a vehicle equipped with an automatic transmission, please make sure to specify this within the text box on the claim form. Mishimoto is not responsible for incorrect replacement shipments if transmission type is not indicated.



WARNING
Cancer and
Reproductive Harm
www.P65Warnings.ca.gov

This product can expose you to chemicals which are known to the state of California to cause cancer. For more information visit: www.p65warnings.ca.gov