



INSTALLATION GUIDE

CTS-TR-1070



20630 Mufford Crescent, Unit #309
Langley, British Columbia V2Y 2V9

www.CTSTURBO.com

WHAT IS INCLUDED

1. CTS K04 Turbo
2. Hardware



NOTES

Vehicle used in this guide is a 2012 Audi A4. Other cars will follow the same steps. We highly recommend installation using a hoist. Professional installation recommended. Always make sure the car is safe to work on. Do not work on a hot motor.

STEP 1

Remove the intake system.



STEP 2

Remove the PCV return line from the turbo.

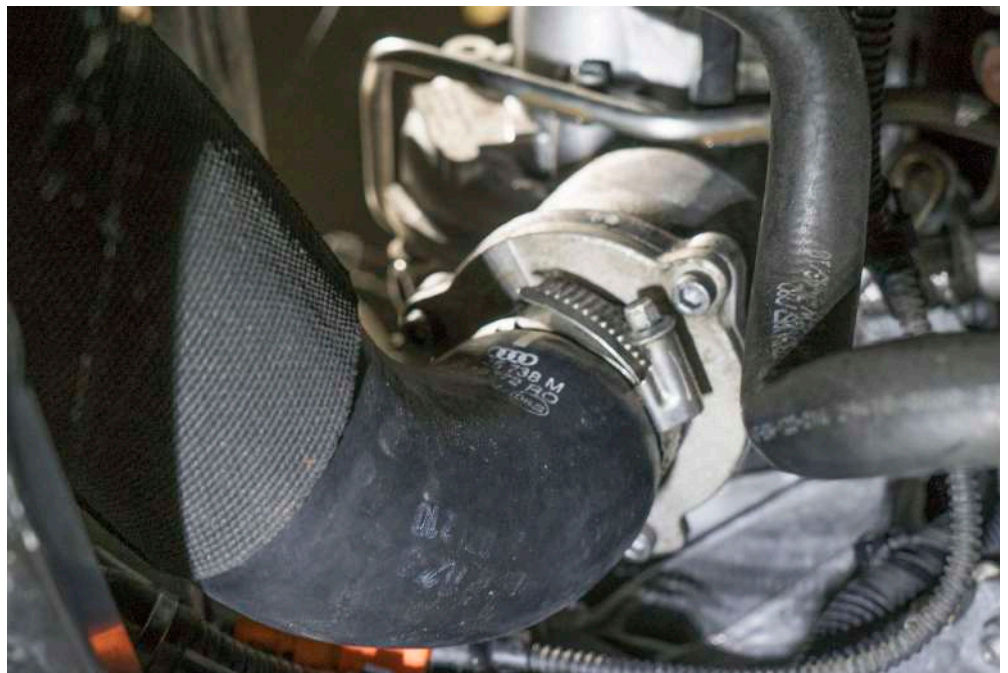


STEP 3

Remove the breather line.

**STEP 4**

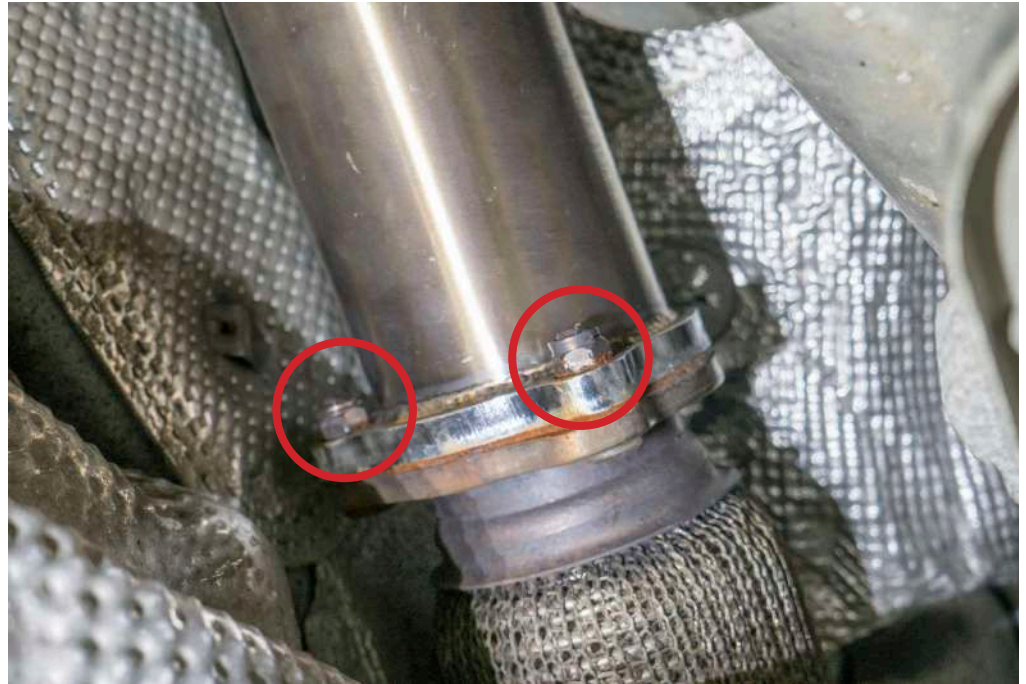
Remove the charge pipe that connects to the turbo.



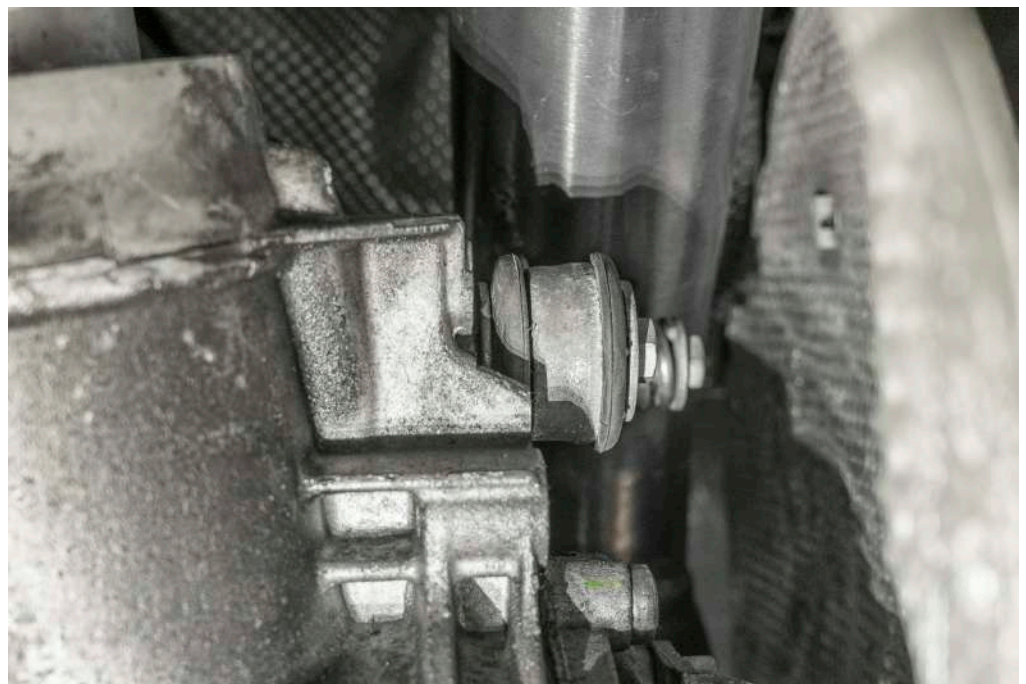
STEP 5

Remove the nuts connecting the downpipe and midpipe.

There is a third nut that is easier to remove with an extension as shown in Step 7

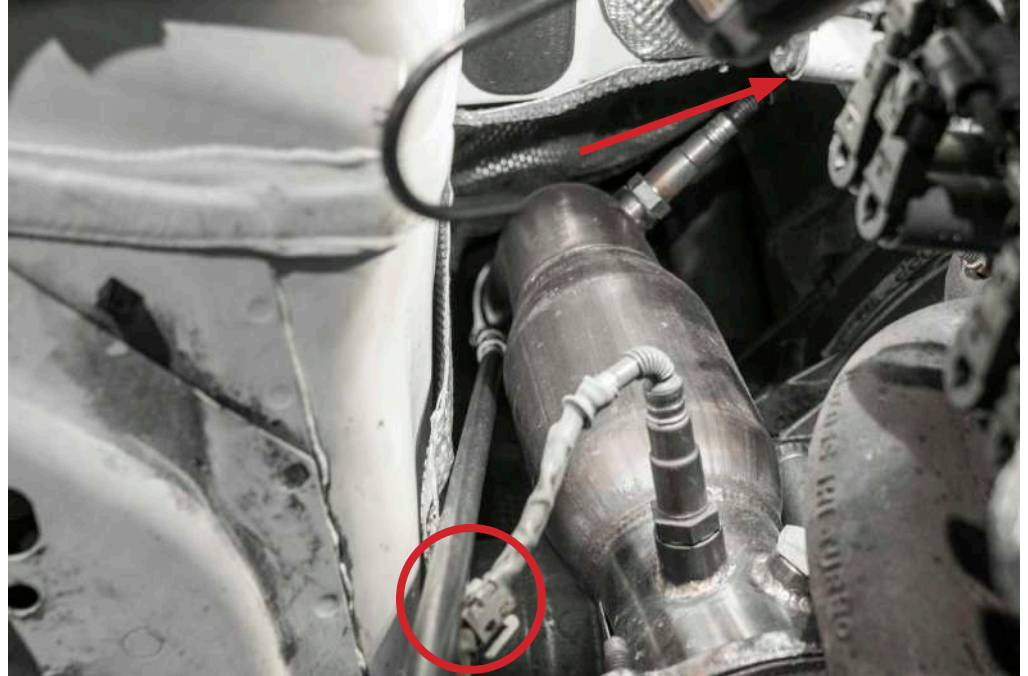
**STEP 6**

Remove the bolt that attaches the downpipe hanger to the transmission mount.



STEP 7

Disconnect the O2 sensors electrical connectors



STEP 8

Remove the nuts and downpipe from the turbo.



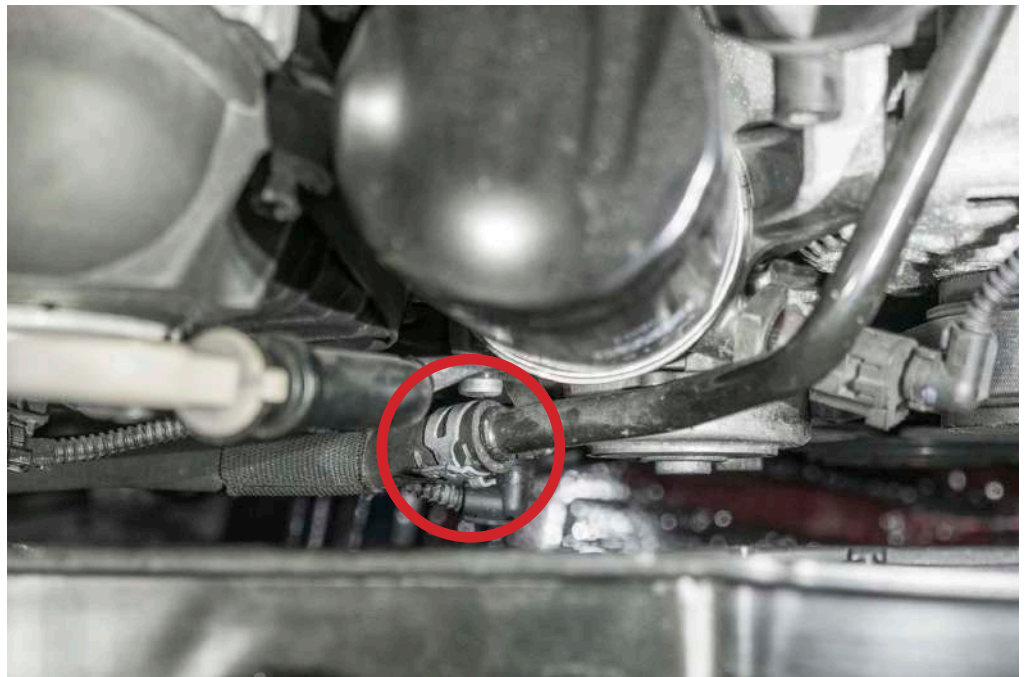
STEP 9

Drain the oil and coolant.



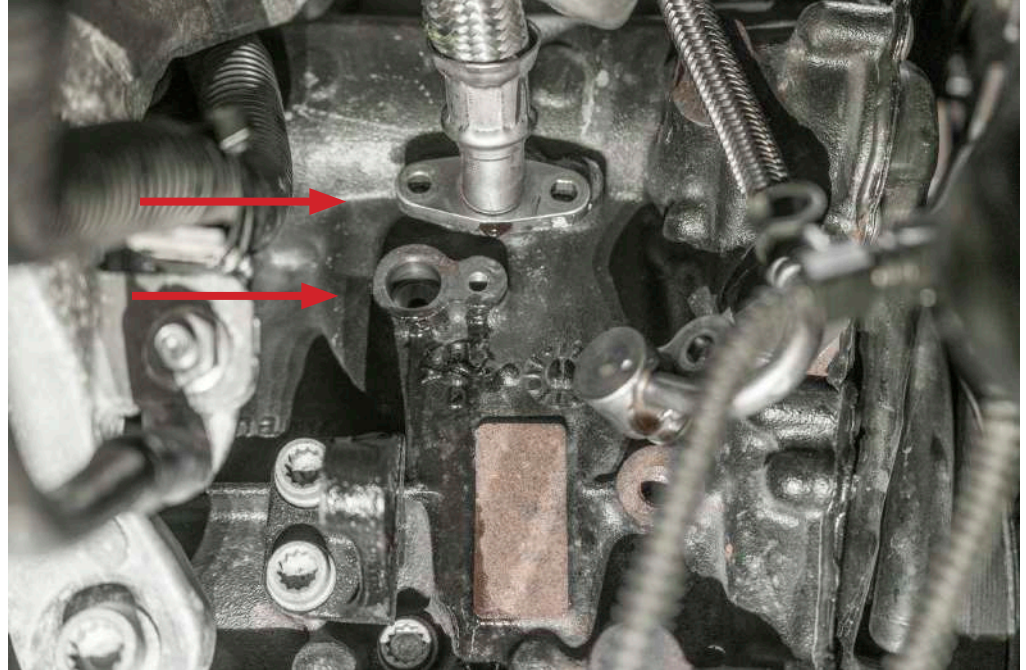
STEP 10

Remove turbo water line.



STEP 11

Disconnect the oil and water lines connected to the block.



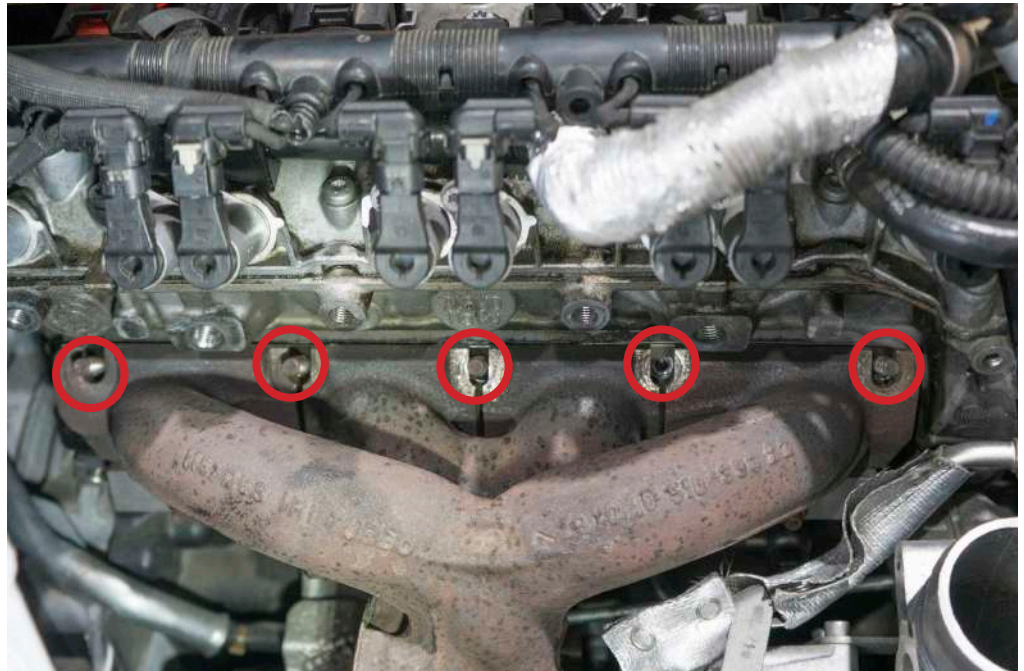
STEP 12

Remove the water line from the turbo



STEP 13

Remove the nut holding the turbo manifold to the block

**STEP 14**

Remove the turbo.



STEP 15

Transfer the lines from the OE turbo to the CTS turbo.

Before installing the turbo check that the water line is in the same position as the OEM turbo. If it isn't you'll need to swap the block off to the other port.

**Also there is a copper spacer crush washer that needs to be used for clearance. You will see it installed on step 16*



STEP 16

Install the turbo and all the necessary lines, O2 Connects and downpipe.

Install new coolant and oil.

You are done!

